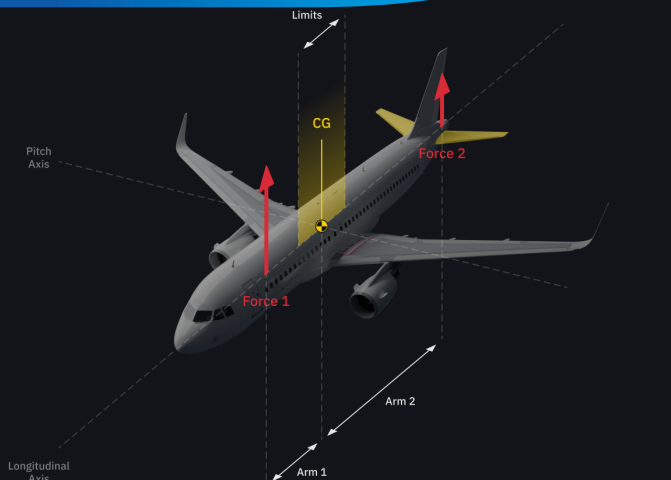


ATPL(A) Theory

acc. FCL.500



CG in operational limits



$$(Force 1 \times Arm 1) - (Force 2 \times Arm 2) = 0$$

The ATPL(A) course by TL Aviation uses the latest technological solutions to deliver a highly intuitive, interactive and aesthetically astounding approach to learning. At times, the pathway to gaining an ATPL license may seem exhausting and endless, but through immersion in engaging activities, coupled with the robust, reliable instruction provided by experienced aviators and instructors, motivation is raised, progress is tangible, and the pathway is clear and smooth.

The ATPL(A) course comes with an advanced LMS where instructors and students gain immediate access to all the support and resources they need. From valid and verified exam practice tests, onboarding packs, progress trackers, to customizable records management tools and even on-line communities, the LMS provides an attractive business model tailored to clients' needs where experiences and knowledge can be shared. Wherever you are, whenever you choose, and whatever your role, the ATPL(A) CBT is instantly accessible and can be ordered by Training Organizations and individual Pilot students.



Interactive



LMS platform



Tracking progress



All devices compatible

Your place to become a pilot



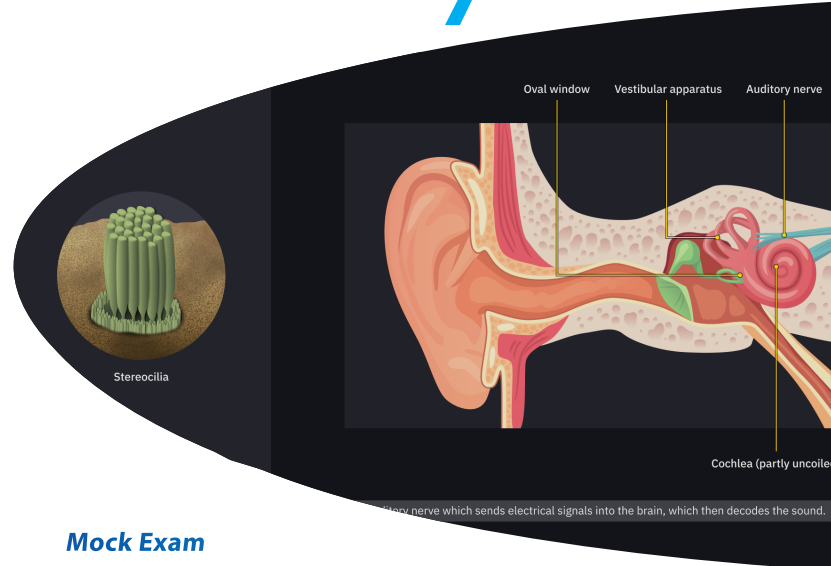
Course Content acc. AMC 1 to Appendix 3 - Training course for issue of an ATPL(A)

- Air Law • Meteorology
- Aircraft General Knowledge
- Flight performance and planning
- Human performance and limitations
- General Navigation
- Radio Navigation
- Operational procedures
- Principles of flight
- Communications
- KSA 100

Duration

- CBT Training: 585 hours
- ATO Training 70 hours

The maximum training period acc. Part-FCL by which the theoretical training must be completed is 18 months from the date of registration of the applicant at the responsible aviation authority.



Mock Exam

After completing the CBT and receiving classroom instruction, the preexamination takes place at the ATO using the Aviation Exam Question Trainer. This must be passed with at least 85% and is valid for 12 months acc. FCL.025 (c).

TL Aviation ATPL(A) eLearning course is designed to support students learning ATPL(A) theory and preparing for their EASA-regulated exams.

Price (CBT and ATO training) **3.900 € (net)**

The training is exempted from regular taxation. Prices without VAT apply.

Example 4

Calculate the amount of fuel needed to fly for 3 h and 30 min with fuel consumption 8.2 gal/h

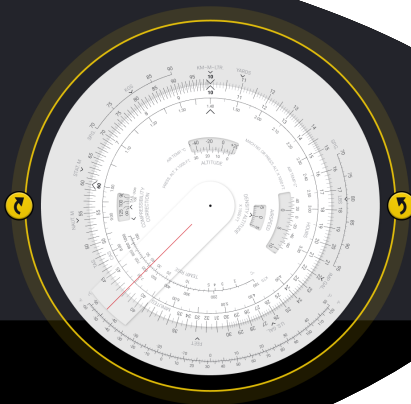
Data:

Time = 3 h 30 min

Fuel consumption = 8.2 gal/h

Unknown:

- Amount of fuel



For further information visit our homepage. For example by using this QR code >

